

CANYON COMMERCE CENTER FOR LEASE - 464,055 SF

ALERE
Property Group LLC



1560 SIERRA RIDGE DRIVE | RIVERSIDE, CA 92507

PROPERTY FEATURES:

- › 1,974 SF of Office
- › 32' Warehouse Clearance
- › Located in Foreign Trade Zone
- › 59 Dock High Loading Doors (9'x10')
- › 29 Mechanical Dock Levelers (35,000 lb Capacity)
- › 29 Swing-Arm type Dock Lights
- › 2 Ground Level Ramp Loading Doors (12'x14')
- › ESR Fire Sprinkler System with K-17 Sprinkler Heads
- › MM-80 in Speed Bays
- › Secured Concrete Yard with Motorized Gates (187' Truck Court)
- › 89 Trailer Storage Spaces (Inside Truck Court)
- › 297 Auto Parking Stalls (Outside Truck Court)
- › Battery Charging Area
- › 2.5% Skylights
- › White Scrim Foil Insulation
- › Painted Interior Walls and Columns
- › 2,000 Amps 277/480 Volts (Expandable to 4,000 Amps)
- › Immediate Access to I-215 and 60 Freeways



KEVIN MCKENNA

License No. 00887289

909 937 6342

Kevin.McKenna@colliers.com

IAN DEVRIES

License No. 01019686

949 724 5509

Ian.Devries@colliers.com

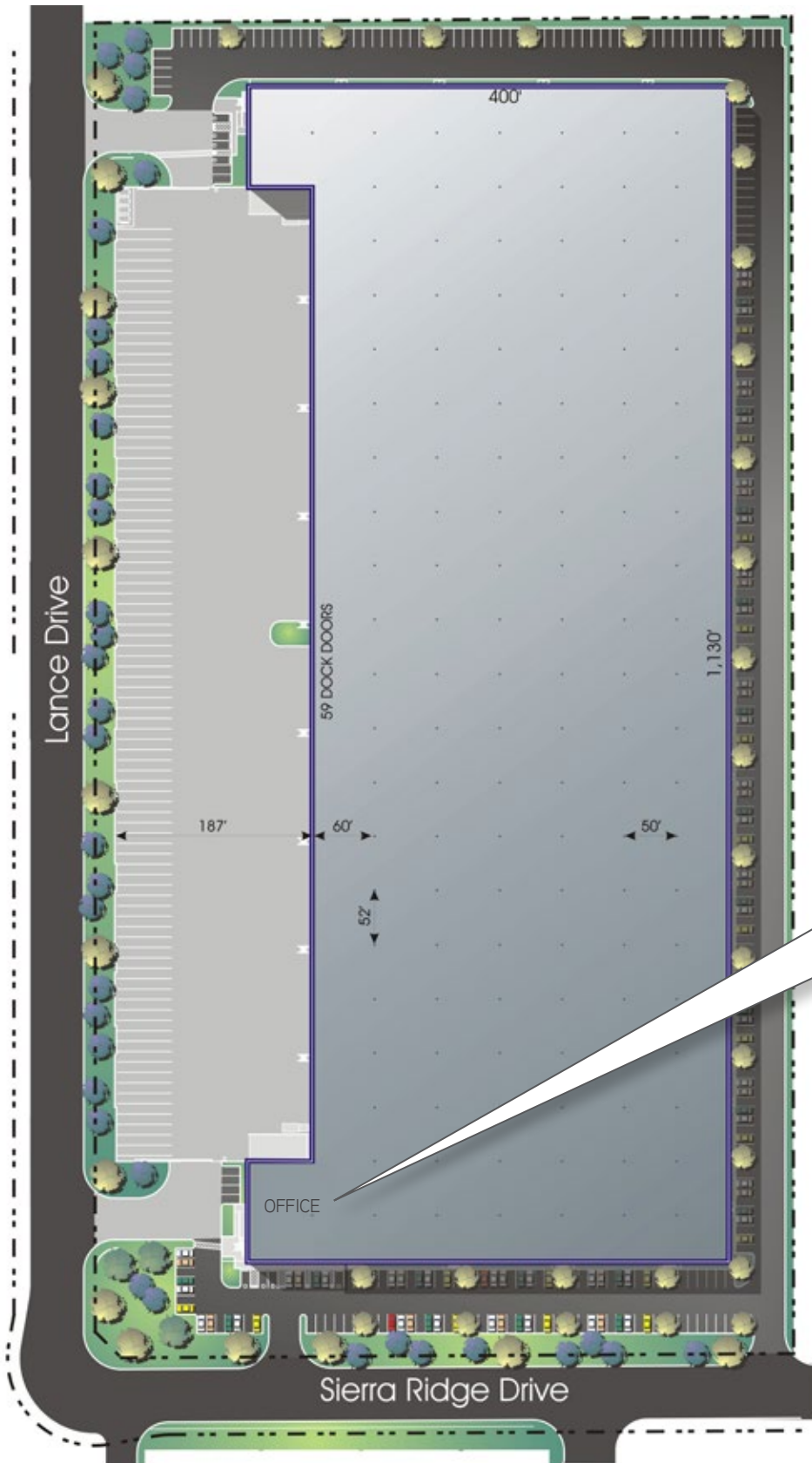
COLLIERS INTERNATIONAL
2855 E. Guasti Rd., Suite 401
Ontario, CA 91761
www.colliers.com



WWW.1560SIERRARIDGE.COM

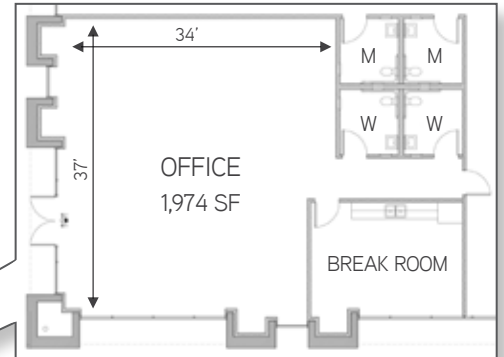
CANYON COMMERCE CENTER FOR LEASE - 464,055 SQUARE FEET

ALERE
Property Group LLC



Corporate Neighbors

- Big 5 Sporting Goods
- Pepsi Bottling Group
- Food 4 Less
- MBM Foods
- Ross Stores
- Ozburn-Hessey Logistics
- Cooper Lighting
- Harbor Freight Tools
- Minka Lighting
- Glidden Paint
- World Kitchen
- Sysco
- Home Depot
- Lowe's
- Kia Motors



KEVIN MCKENNA

License No. 00887289
909 937 6342
Kevin.McKenna@colliers.com

IAN DEVRIES

License No. 01019686
949 724 5509
Ian.Devries@colliers.com

